

DETAIL PLAN 5 (Scale 1:1000 @ A1)



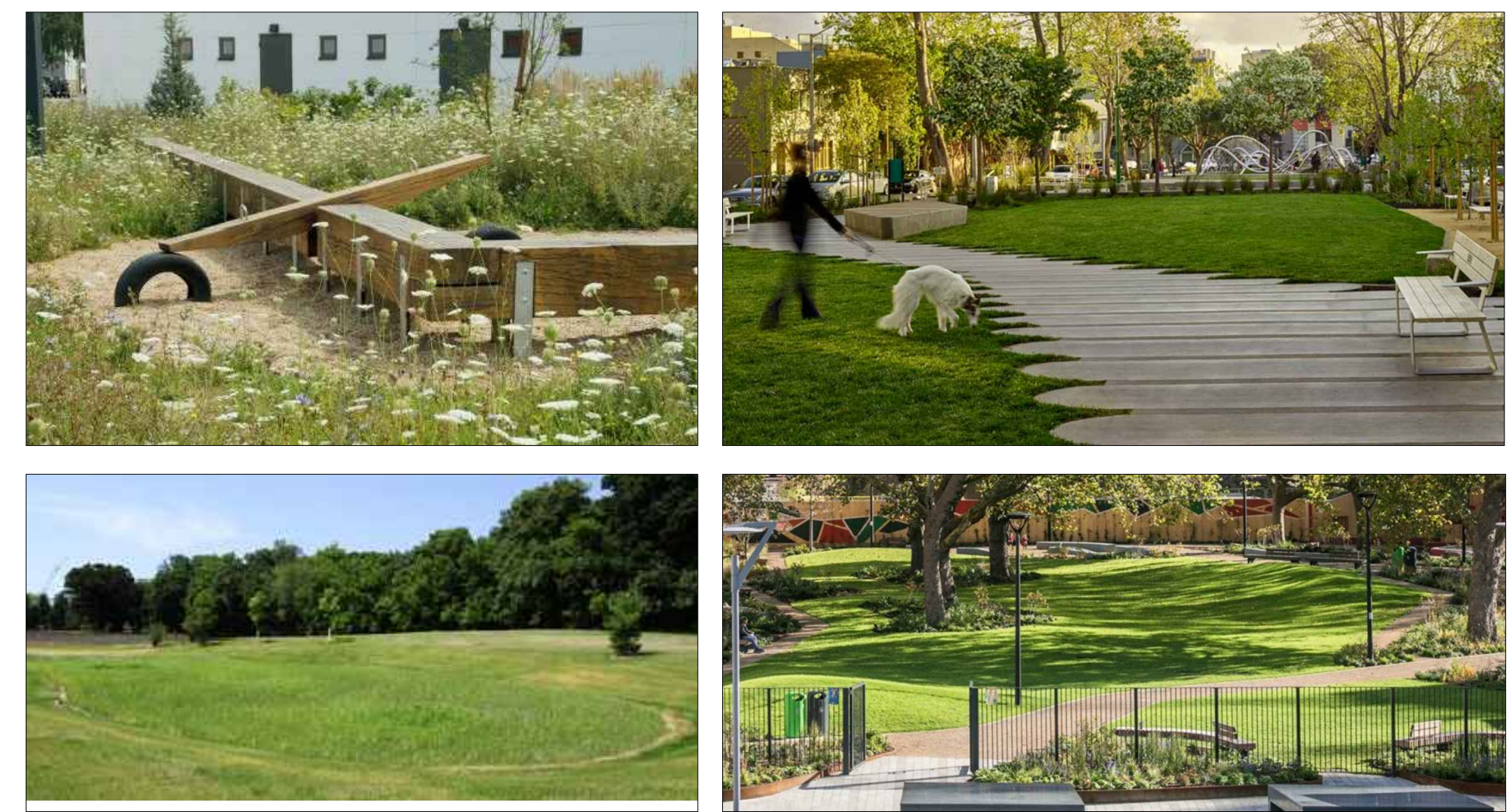
**Local Public Spaces-** The overall plan identifies a number of smaller 'pocket' type spaces providing a new local amenity incorporating GI and which will also provide a setting for biodiversity and water management. The key components of the spaces include:

- Enhancement of existing hedgerows where retained
- Incorporation of SuDs measures to engineers design details
- Provision of enhanced pedestrian/cycle connection to existing public spaces
- Informal / Natural play

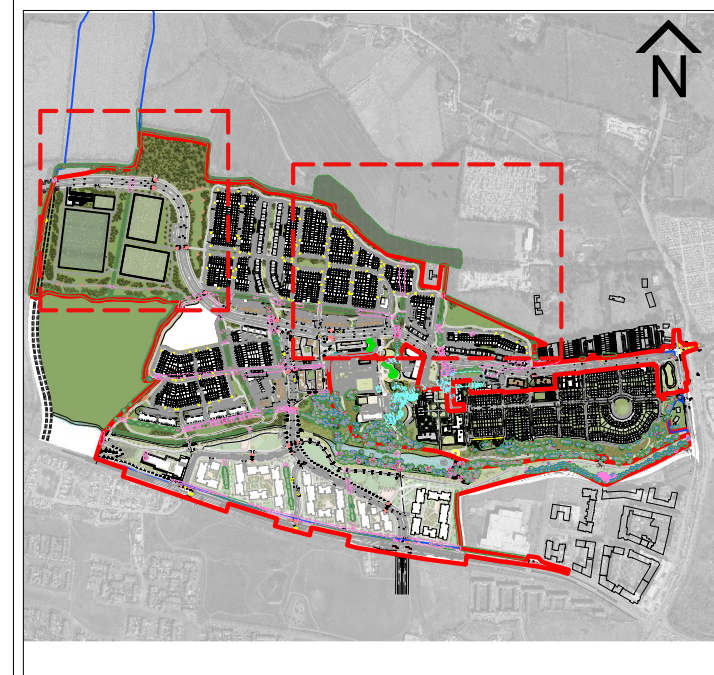
**Communal Courtyards-** The primary design consideration within the courtyards was to consider the requirements of the future residents through the provision of high quality semi-private spaces. The courtyard designs allow for flexible multi-use areas which incorporate passive supervision from duplexes which overlook the spaces. The courtyard designs provide for the following uses:

- Secure space for children's play with formal and informal play areas
- Sitting areas in sheltered sunny locations & Potential 'green composting' areas
- Opportunity for growing herbs in raised planters
- Quality lighting to ensure safe night time environment

CONCEPT IMAGES



KEY PLAN



LEGEND

- Red Line Boundary
- Bitmac surface to access road to engineer's spec.
- Concrete footpath
- Bitmac/bound gravel footpath
- Proposed paving
- Proposed home zone
- Proposed Sofa Grass
- Colored Bitmac to Cycle-way
- Lawn area
- Shrub / Wildflower meadow
- Proposed tree planting
- Woodland planting
- Proposed grass pitch location (refer to eng drawing)
- Existing hedgerow retained (to Arborist's dwg)
- Existing treesretained (to Arborist's dwg)
- Existing trees/hedgerow removed (to Arborist dwg)
- Existing River Mayne
- Proposed SUDS (refer to eng drawing)
- Existing lakes (refer to engineer's dwg)
- Proposed natural play/exercise equipment
- Proposed seating area
- Proposed public art
- Proposed bike parking

DETAIL PLAN 6 (Scale 1:1000 @A1)



Green Infrastructure

A key element of the Belcamp SHD has been the incorporation of existing and new GI into the Plan. The principal GI elements existing within the Plan area include the hedgerows and drainage ditches. The new GI elements will comprise the provision of high quality public spaces, creation of key linkages to existing parkland, new tree lines and SuDs (to engineer's drawing).

The GI Objectives of the SHD lands are as follows:

- To create high quality public spaces that respond to their environment, are well designed, allow for a mix of active and passive recreation, facilitate ease of maintenance and are visually attractive.
- To create multi-functional public spaces that provide a setting for amenity, biodiversity and water management
- To retain existing hedgerows (where achievable) and create new corridors that will encourage biodiversity and informal recreational use (refer to arborist hedgerow survey as prepared by The Tree File)
- To create surface water elements based on the sites natural drainage that function as semi-natural spaces and sustainable drainage management (refer to engineers dwgs).

**Class 1 OS Active Recreation-** The plan provides opportunity for Class 1 active recreation space including football pitches.

CONCEPT IMAGES



rev	drawn	date	description

© COPYRIGHT  
This drawing and any design hereon is copyright of the big space ltd and must not be reproduced in whole or in part without their express written consent.

**DIMENSIONS**  
Figured dimensions only to be taken from this drawing. All dimensions to be checked on site. Landscape Architect to be informed immediately of any discrepancies before work proceeds.

**The Big Space**  
creative dock  
malahide marina village  
malahide co. dublin

**LTBS**  
landscapearchitecture  
urbanism + landscape planning

T +353 (0)1 806 1840  
E info@tbsstudio.com  
W www.tbsstudio.com

PLANNING

job BELCAMP SHD  
dra DETAIL SHEET 3 : Detail Plan 5 & 6

Date	Dim.	Chd.	Passed	Scale
Job No.	RD	DE	DE	AS SHOWN
MAY 2022				
1520	303			6